

## Digital Ophthalmoscope Camera System powered by AGNES Connect

### AMD-2660-SYS



#### Product Features:

- Automatically integrates with additional modules of AGNES Interactive® software to share medical images and live streaming video in real-time with the remote specialist.
- **Direct USB connection allows you to immediately view the medical images on a PC** (eliminates the need for an SD memory card).
- 2 mega pixel CMOS image sensor captures high definition (1920p x 1080p) medical images.
- Built-in white LED illumination provides a crisp light source for clear medical images with true color representation.
- Large rear-facing viewing screen makes it easy to see what you are "looking at" through the lenses.

## Image Functionality & Handset Features:

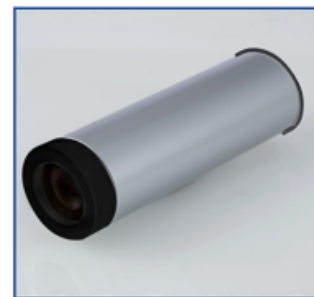
- 2 MPixel CMOS image sensor
- Image format: JPEG
- Video format: H.264
- Resolution: full HD true 1920x1080
- Dimensions: 3.5" x 1.7" x 8" (89mm x 44mm x 205mm)
- Weight: .56 lbs (254 g)
- Bayonet connector for attached optic modules
- 3.5" HD full color TFT-LCD display



## Ophthalmoscope Lens:

Enables non-mydratic fundus examinations with reflection-free imaging and a wide field of view to capture the appearance of optic disc, macula and retinal vasculature.

- Reflection-free imaging
- Not necessary to dilate pupils
- White and infrared LEDs for image targeting and capturing
- Resolution: full HD 1920 x 1080 pixels
- Field of view: 25°
- Diopter compensation: -20D to +20D
- Dimensions: 5.2" x 1.7" (133mm x 42mm)
- Weight: .26 lbs (120g)



AMD Global Telemedicine  
321 Billerica Road  
Chelmsford, MA 01824

Toll-Free: 1-866-449-8210  
[info@amdtelemedicine.com](mailto:info@amdtelemedicine.com)  
[www.amdtelemedicine.com](http://www.amdtelemedicine.com)